

## **Supplemental Material**

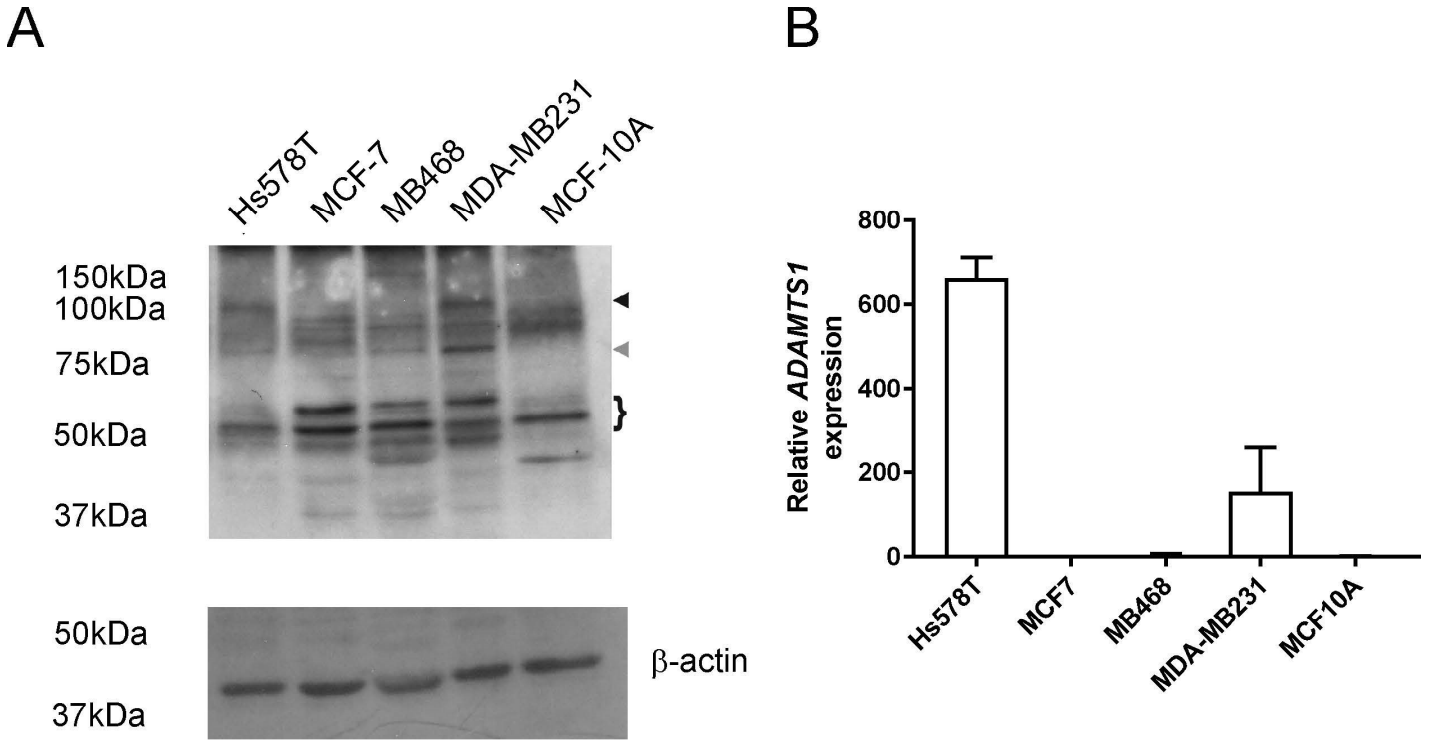
# **ADAMTS1 Promotes Adhesion to Extracellular Matrix Proteins and Predicts Prognosis in Early Stage Breast Cancer Patients**

Izza A. Tan   Kate Frewin   Carmela Ricciardelli   Darryl L. Russell

Robinson Research Institute, Discipline of Obstetrics and Gynaecology, Adelaide Medical School, University of Adelaide, Adelaide, Australia

### Supplementary Figure 1

(A) ADAMTS1 expression in breast cell lines by RT-PCR determined by delta-delta CT value calibrated to MCF10a and (B) western immunoblotting of cell extracts from each cell line. Both p110kDa (black arrow) and p87 (grey arrow) ADAMTS1 were detected in Hs578T and MDA-MB231 and cell extracts. Bands highlighted by brackets at 50-60kDa are thought to be non-specific since they are dominant in cells that have no *ADAMTS1* expression.



Supplementary Figure 1